

Raymond N. Herb, Jr.
Michael L. Myer
Susan M. Herb
Kathleen M. Herb
Jeffrey A. Carpenter



Realtors / Since 1927
(717) 272-5637

FOR SALE in Lebanon County
1151 Cornwall Road, SUITE #4, Lebanon, PA 17042



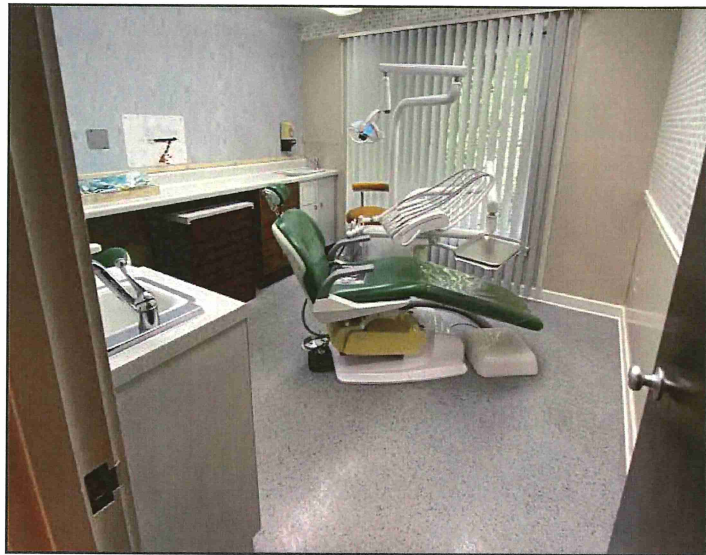
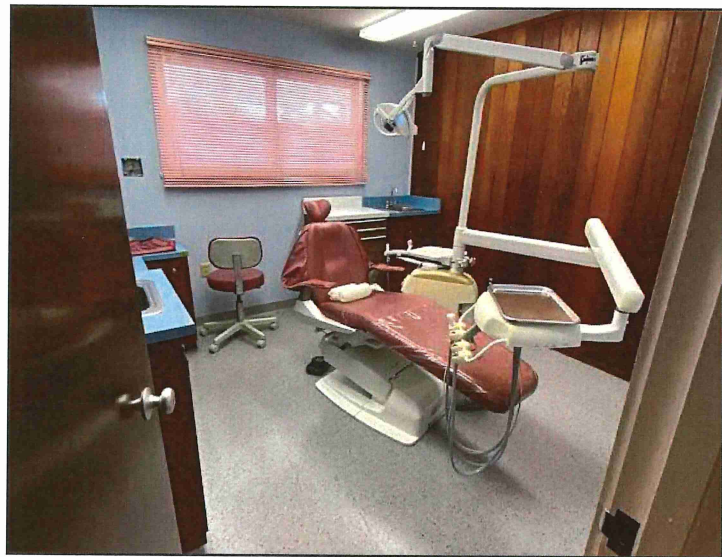
- ◆ *1,664 Square Feet*
- ◆ *Frame Construction*
- ◆ *Ample Bath Facilities*
- ◆ *Standard Electric Svc.*
- ◆ *Public Water & Sewer*
- ◆ *Dental/Medical/Professional*
- ◆ *Zoned RLD - Res. Low Density*
- ◆ *Gas Warm Air Heat w/AC*
- ◆ *Ideal Investment Property*
- ◆ *1/1/2024 R.E. Taxes \$6,595/YR*

This property is located in the City of Lebanon and has great street frontage. It consists of professional office space with partial finished basement previously occupied by a dentist. Property is part of Condo Association and buyer requires Condo Association approval. Parking in common. If you would like more information or schedule a showing, please give us a call or email at info@gellerrealestatecompany.com.

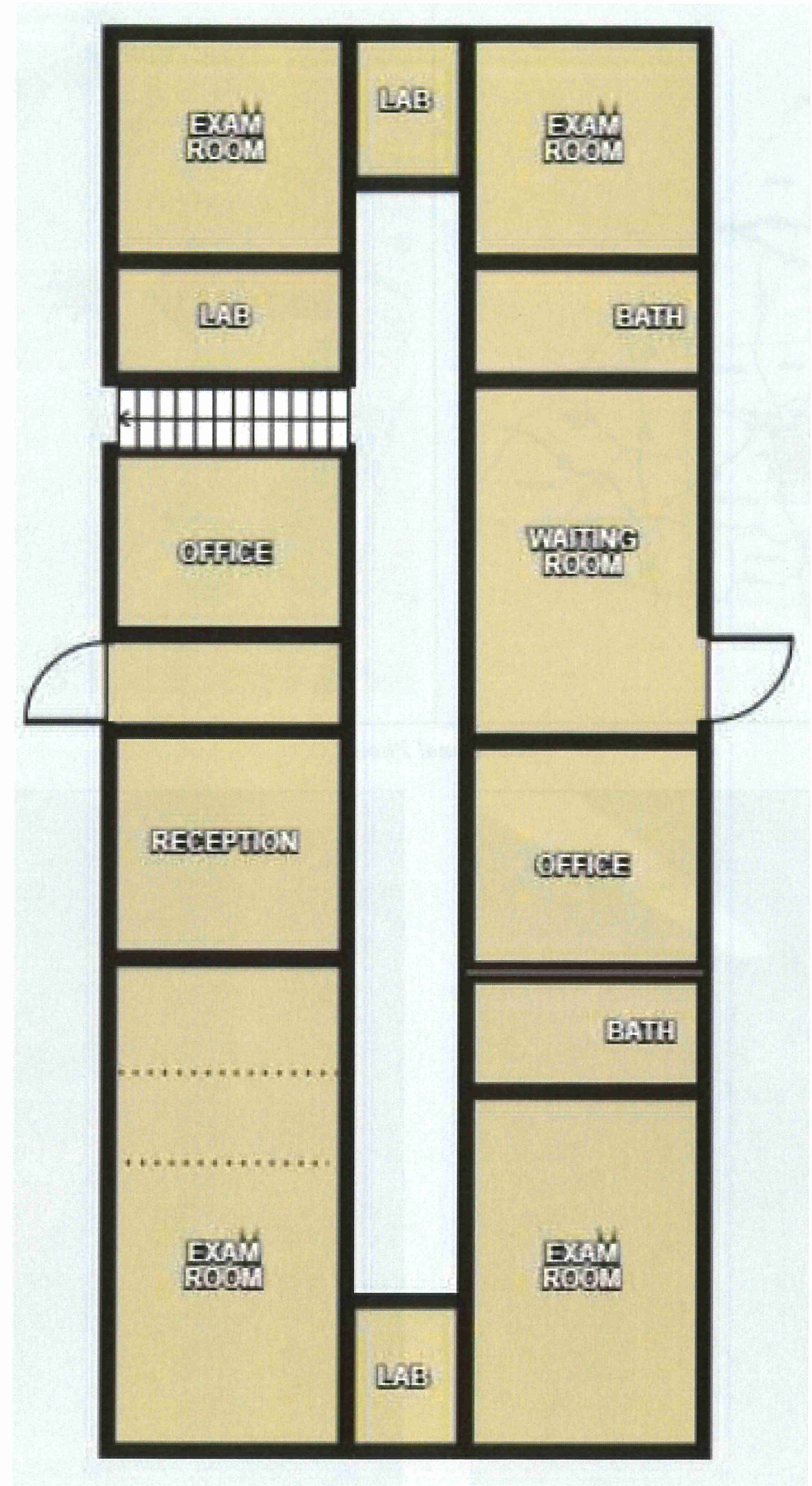
Call Ray Herb, Jr. or Mike Myer at (717) 272-5637
Commercial/Industrial Sales and Leasing

Mailing Address: 749 E. Cumberland Street, Lebanon, PA 17042

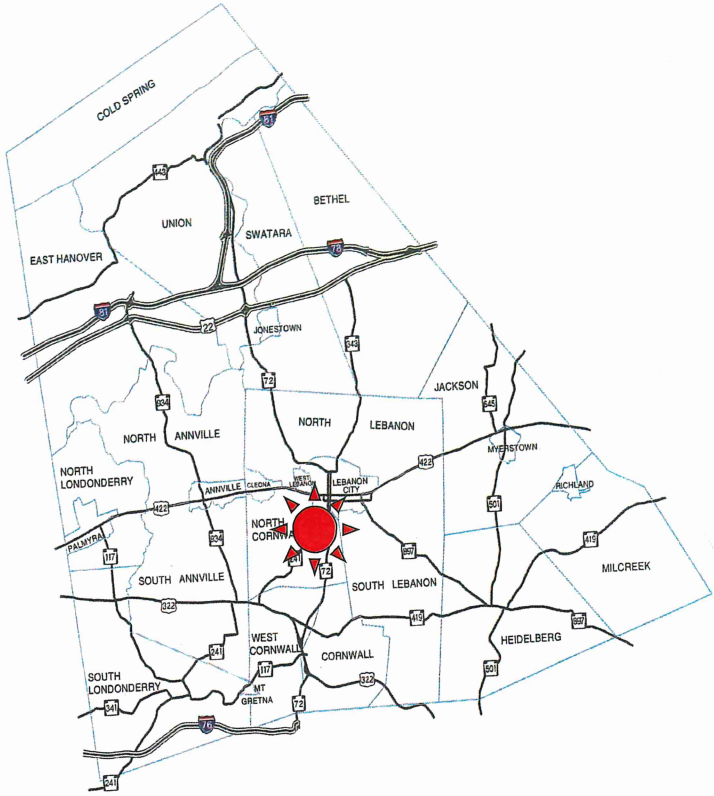
Photos



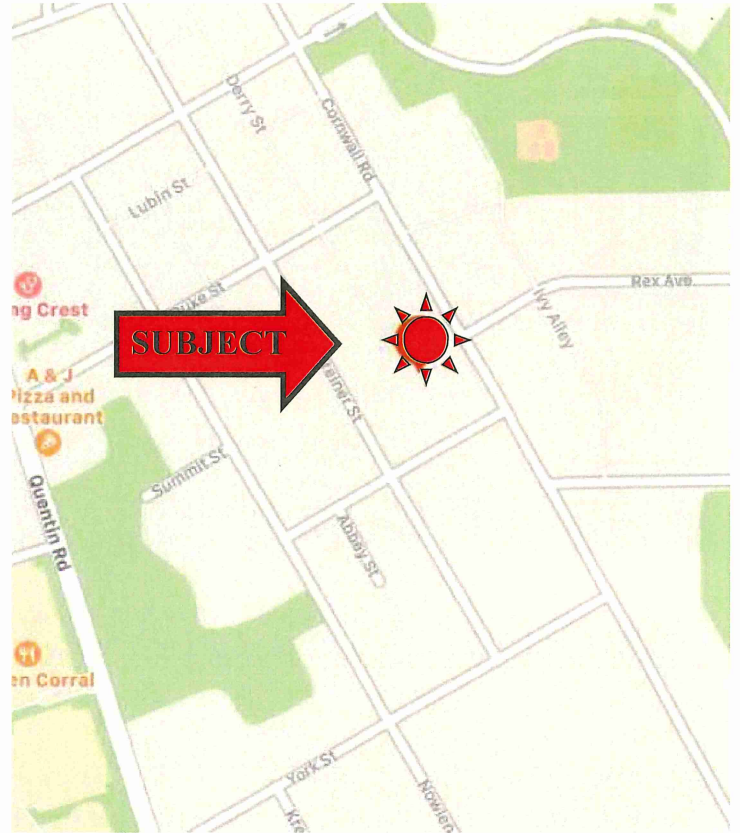
Floor Plan



COUNTY MAP



LOCATION MAP



Additional Photos

